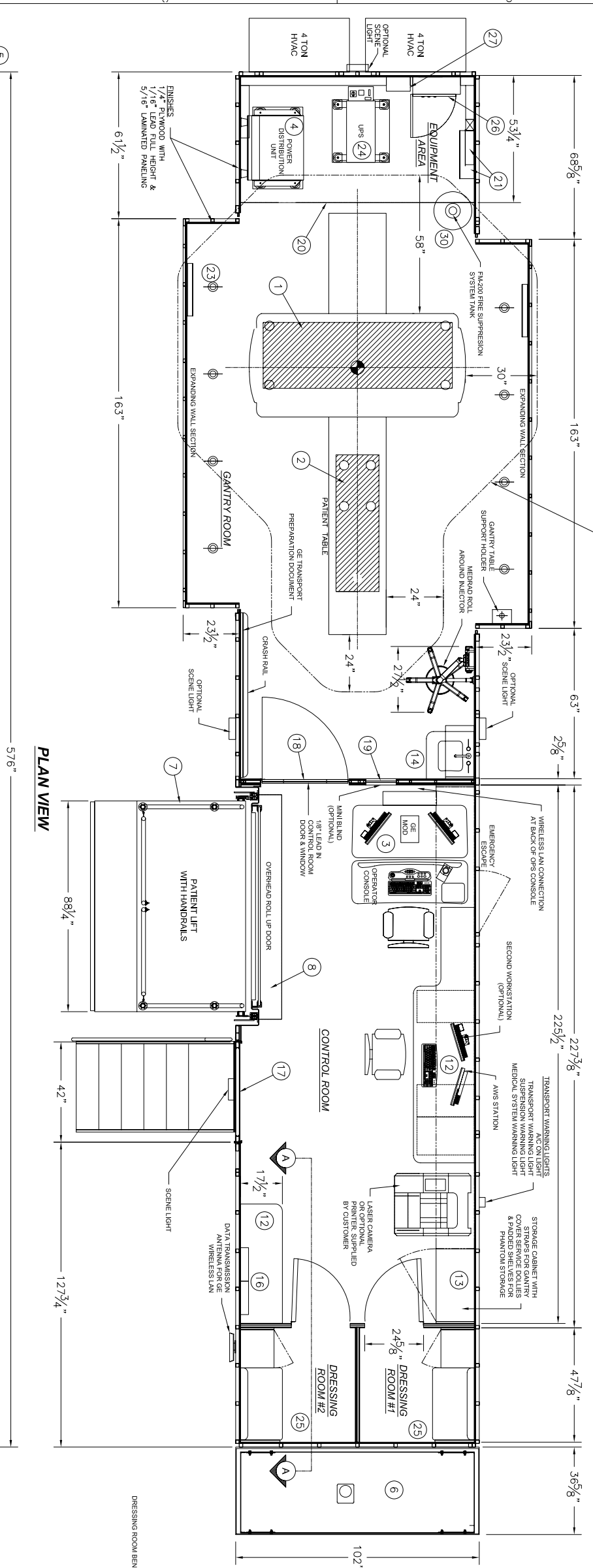
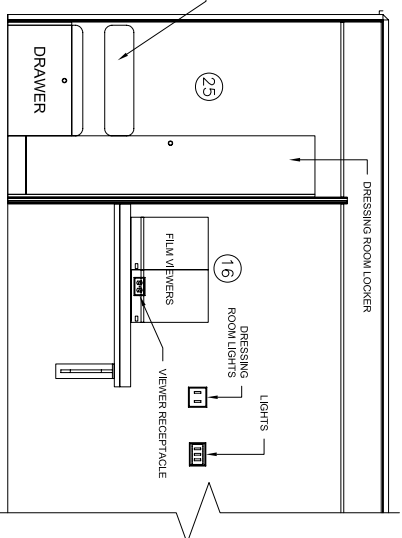


REV.	REV. DATE	CHK. BY	CHK. DATE	ENG.	DESCRIPTION
19	22JUN06	DKR	22JUN06	WLL	UPDATED UPS

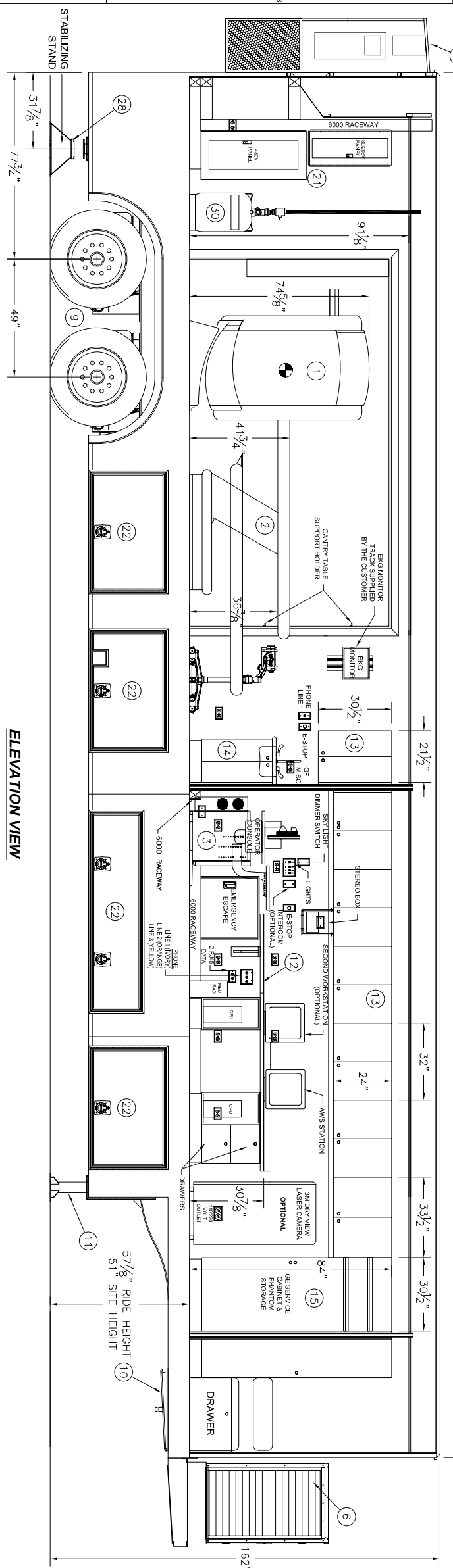
REVISIONS



PLAN VIEW



SECTION A-A



ELEVATION VIEW

ITEM QTY	PART NUMBER	DESCRIPTION
29	1	FM-200 FIRE SUPPRESSION SYSTEM (OPTIONAL)
28	2	STABILIZING STAND
27	1	GE UPS CONTROLS
26	1	GE MDP
25	1	PATIENT CHANGING ROOMS
24	1	UPS
23	2	SIDE COVER SERVICE HANGERS
22	9	LOWER COMPARTMENT DOORS (4-PS / 15-DS)
21	2	ELECTRICAL SERVICE PANELS (1-480V / 1-208V)
20	1	CURTAIN
19	1	16" x 24" LEADED WINDOW
18	1	34" x 80" LEADED DOOR w/ 16" X 24" LEADED WINDOW
17	1	42" x 80" ENTRY DOOR
16	2	VIEWER
15	1	FULL HEIGHT STORAGE CABINET
14	1	SINK CABINET
13	7	OVERHEAD CABINETS
12	2	WORK COUNTER
11	2	HYDRAULIC LEVELING LEGS, 32,000 LB. CAP.
10	1	AIR RIDE UPPER COUPLER (KING PIN)
9	1	AIR RIDE SUSPENSION, 34,000 LB. CAP.
8	1	ROLL-UP DOOR, 7' x 6'-6"
7	1	PLATFORM LIFT - 89" WIDE ALUMINUM PLATFORM
6	1	100KW DIESEL GENERATOR
5	2	48,000 BTU AIR CONDITIONER
3	1	GEMS POWER DISTRIBUTION UNIT
3	1	GEMS OPERATOR CONSOLE
2	1	GEMS PATIENT TABLE
1	1	GEMS SCANNING GANTRY

BILL OF MATERIALS

THIS DRAWING IS PROVIDED ON A CONFIDENTIAL BASIS SUBJECT TO RETURN ON DEMAND OF OSHKOSH SPECIALTY VEHICLES (OSHKOSH), WHICH RETAINS ALL RIGHTS ASSOCIATED WITH IT AND THE ARTICLE OR ARTICLES IT REPRESENTS. DISCLOSURE, REPRODUCTION OR ALTERATION OF ANY PART OF THIS DRAWING OR MANUFACTURE, USE OR SALE OF THE ARTICLE OR ARTICLES REPRESENTED IS PROHIBITED WITHOUT THE PRIOR WRITTEN AUTHORIZATION OF OSHKOSH. © OSHKOSH SPECIALTY VEHICLES (unpublished).

SHEET NUMBER: SHEET 1 OF 1
 REFERENCE DRAWING: NONE
 TITLE: GE MEDICAL SYSTEMS LightSpeed CT
 GENERAL LAYOUT
 OSHKOSH SPECIALTY VEHICLES
 16745 S. LATHROP AVENUE
 HARVEY, IL 60426
 PHONE: (708) 596-5066
 FAX: (708) 596-2480

DATE: 08OCT02
 DRAWN BY: [Signature]
 CHECKED BY: [Signature]
 SCALE: 1/2"=1'-0"
 DRAWING NUMBER: 10232-A01

JOB#

OSHKOSH SPECIALTY VEHICLES